



FIRE PROTECTION PLANT SOLUTIONS

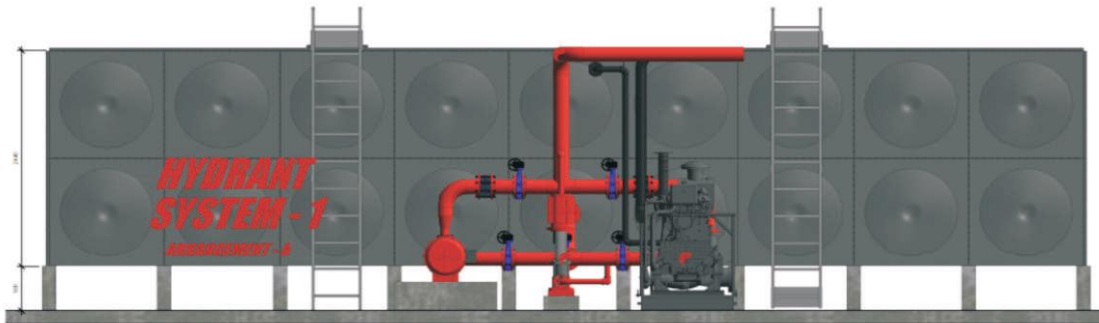
Conventional Fire Protection System



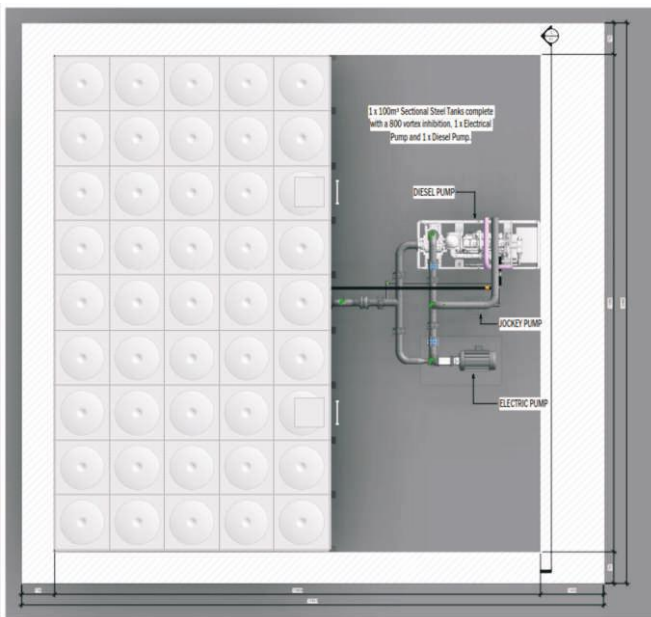
CONVENTIONAL FIRE SYSTEM Package Deal - System 1



3D View



Front Elevation

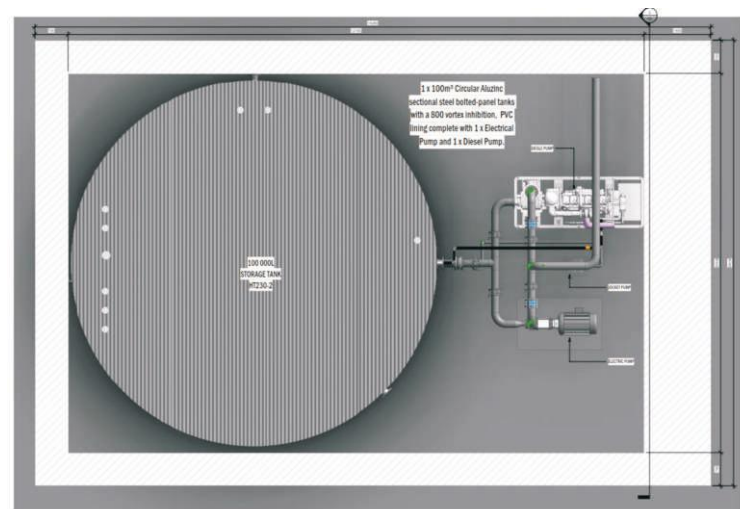
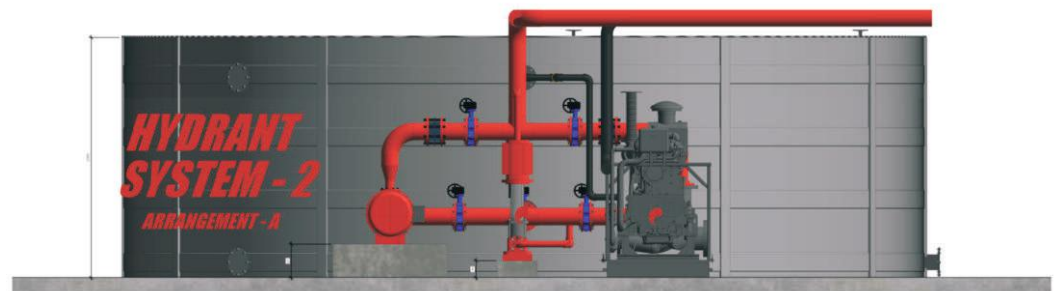


Plan Layout

1 x 100m³ Sectional Steel Tanks complete with a 800 vortex inhibition, 1 x Electrical Pump and 1 x Diesel Pump

Plant Dimensions
13m (L) x 13m (W) x 3.6m (H)

CONVENTIONAL FIRE SYSTEM Package Deal - System 2

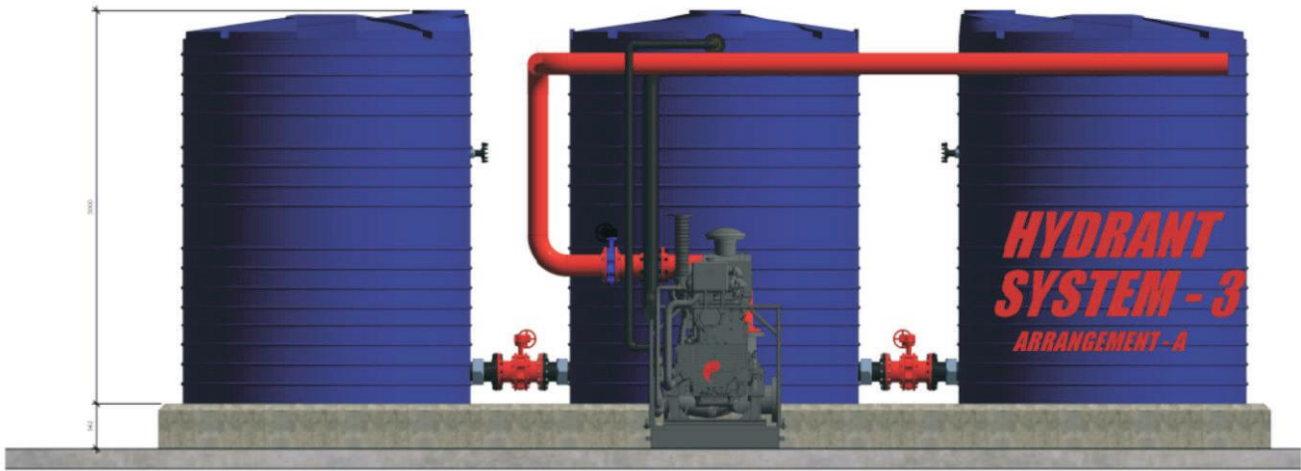


1 x 100m³ Circular Aluzinc sectional steel bolted-panel tanks with a 800 vortex inhibition, PVC lining complete with 1 x Electrical Pump and 1 x Diesel Pump

Plant Dimensions

14.5m (L) x 9.5m (W) x 2.7m (H)

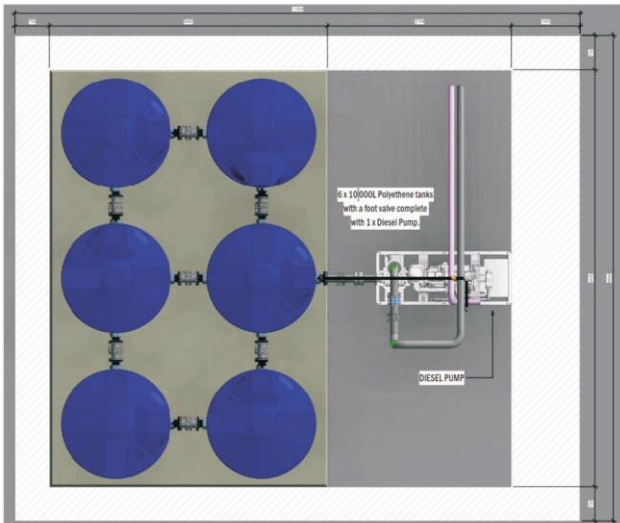
CONVENTIONAL FIRE SYSTEM Package Deal - System 3 Arrangement - A



Front Elevation



3D View



Plan Layout

6 x 10 000L Polythene tanks
with a foot valve complete
with 1 x Diesel Pump

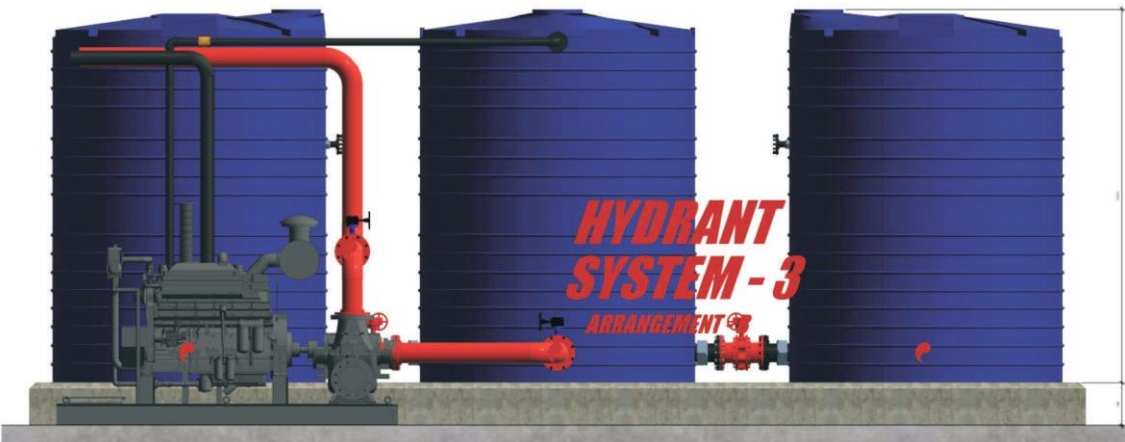
Plant Dimensions

10m (L) x 10m (W) x 3.6m (H)

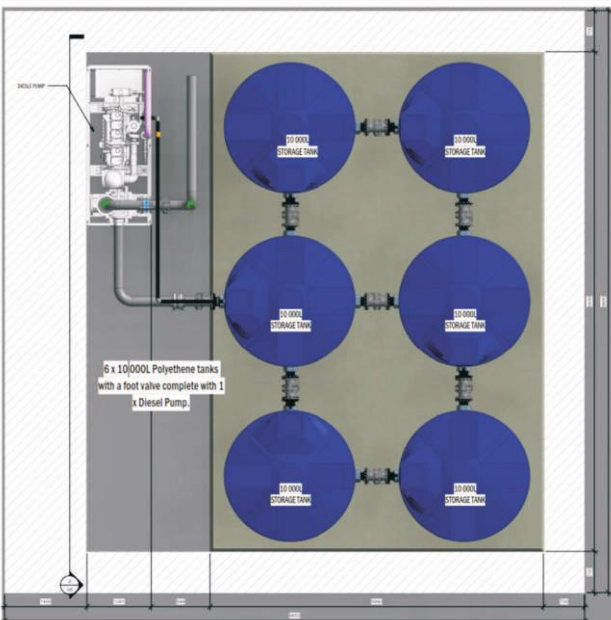
CONVENTIONAL FIRE SYSTEM Package Deal - System 3 Arrangement - B



3D View



Front
Elevation



Plan Layout

6 x 10 000L Polythene tanks
with a foot valve complete
with 1 x Diesel Pump

Plant Dimensions

10m (L) x 11.5m (W) x 3.6m (H)

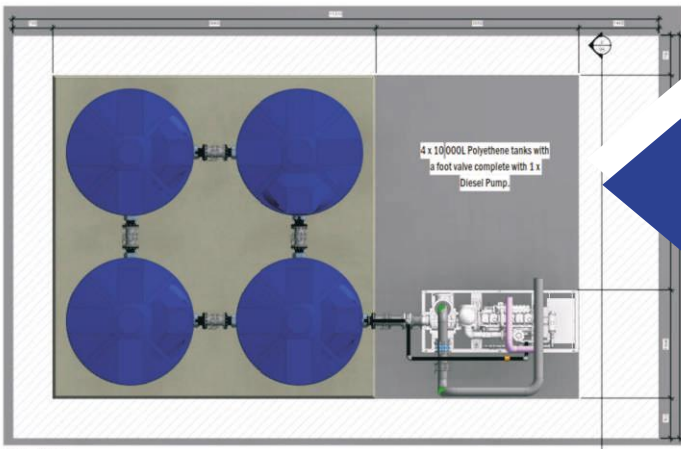
CONVENTIONAL FIRE SYSTEM Package Deal - System 4 Arrangement - A



3D View



**Front
Elevation**



Plan Layout

4 x 10 000L Polythene tanks
with a foot valve complete
with 1 x Diesel Pump

Plant Dimensions
11.5m (L) x 7m (W) x 3.6m (H)

CONVENTIONAL FIRE SYSTEM Package Deal - System 4 Arrangement - B

3D View



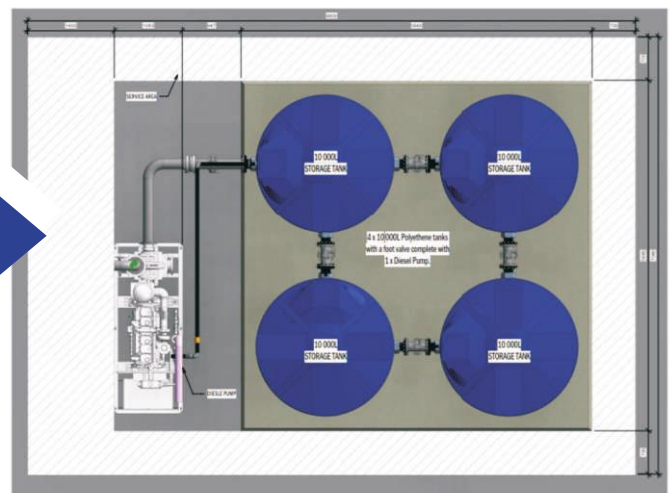
Front
Elevation



4 x 10 000L Polythene tanks
with a foot valve complete
with 1 x Diesel Pump

Plant Dimensions

10m (L) x 7m (W) x 3.6m (H)



Plan Layout

S-PRO

CONSULTING ENGINEERS
(PTY) LTD

 **S-PRO Consulting Engineers (Pty) Ltd**
Reg: 2012/04730/07

 Unit F15, 3 Heron Crescent, Century City,
Cape Town, South Africa

 +27 (0) 21 671 0713

 info@s-proconsulting.co.za

 s-proconsulting.co.za

For any enquiries please call: 021 671 0713



Electrical, Mechanical, Fire Protection Engineers & Facilities Management